

DESCRIÇÃO | DESCRIPTION

O Auramat é produzido com fibras polipropileno 100% anti-estáticas e base de borracha sintética. Indicado para espaços de alto tráfego, como entradas, escadas e espaços onde sejam necessárias cadeiras de rodas. Elevada capacidade de absorção e retenção de sujeira. Resistente aos raios UV e temperaturas climáticas extremas.

Auramat mats are produced with 100% anti-static polypropylene fibers and a synthetic rubber base. Suited for high traffic spaces, such as entrances, stairs and locations where wheelchair traffic is required. High absorption and dirt retention capacity. Resistant to extreme climate temperatures and UV light.

CARACTERÍSTICAS | CHARACTERISTICS

Cores | Colours: 14

Composição | Composition: Fibras polipropileno 100% anti-estático, base borracha sintética
100% anti-static Polypropylene fibers, synthetic rubber base.

Espessura | Thickness: 11mm

Peso do pelo | Fur weight: 1,7 kg/m²

Peso total | Weight: 3,2 kg/m²

Capacidade de absorção | Absorption capacity: 4 l/m²

Inflamabilidade | Flammability: EN 13501 - ASTM D2859 passes DOC-FF-1-70

Aplicação | Application: Interior/Exterior Coberto | *Interior/Covered Exterior*

Tráfego | Traffic: Intenso | *Heavy*

Dimensões | Sizes (cm): Até 200x2000 (sem rebordo) | *Up to 200x2000 (without border)*



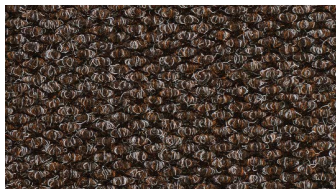
LIMPEZA | CLEANING

- Retirar o tapete do pavimento ou caixa.
- Aspirar e/ou lavar com água corrente e escova, mangueira, ou máquina de pressão com detergente para carpetas ou roupa.
- Pendurar o tapete por uma ponta e deixar secar.
- Colocar novamente no local.

- *Remove the mat from the pavement or box.*
- *Vacuum and/or wash with running water and a brush, hose or pressure washer, with carpet or laundry detergent.*
- *Hang the mat by a corner and leave it to dry.*
- *Place the mat back in place.*

As cores graficamente representadas, podem apresentar desvios em relação à cor original. Tolerância dimensional: 5%
Graphically represented colours may deviate from the original colour. Dimensional tolerance: 5%

CORES | COLOURS



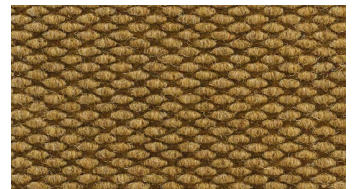
Brown (BR)



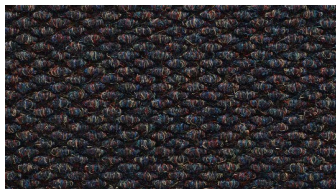
Blue (BU)



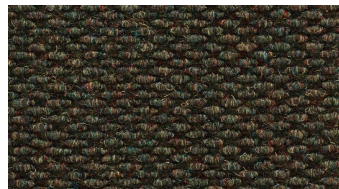
Charcoal (CH)



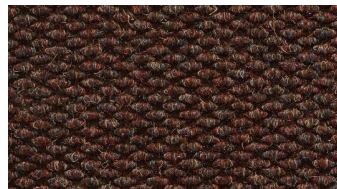
Natural (NA)



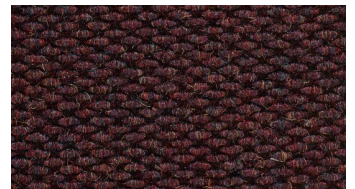
Autumn Black (AB)



Autumn Green (AG)



Autumn Brown (AM)



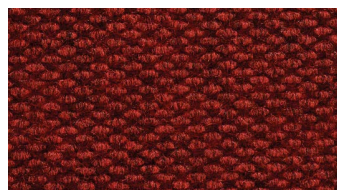
Autumn Burgundy (AW)



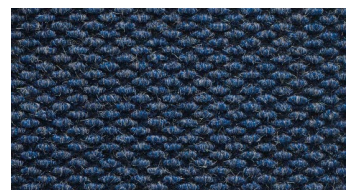
Green (GN)



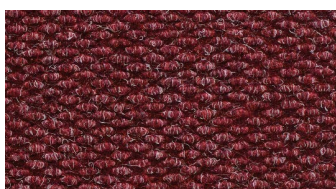
Grey (GY)



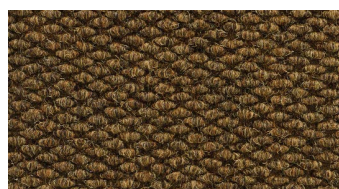
Red (RD)



Royal Blue (RY)



Burgundy (WI)



Autumn Ochre (AO)

As cores graficamente representadas, podem apresentar desvios em relação à cor original. Tolerância dimensional: 5%
Graphically represented colours may deviate from the original colour. Dimensional tolerance: 5%